



**REGIONAL SPECIALISED METEOROLOGICAL CENTRE-TROPICAL CYCLONES, NEW DELHI
TROPICAL WEATHER OUTLOOK**

DEMS-RSMC TROPICAL CYCLONES NEW DELHI DATED 23.09.2024

TROPICAL WEATHER OUTLOOK FOR NORTH INDIAN OCEAN (THE BAY OF BENGAL AND THE ARABIAN SEA) VALID FOR NEXT 168 HOURS ISSUED AT 0600 UTC OF 23.09.2024 BASED ON 0300 UTC OF 23.09.2024.

BAY OF BENGAL:

THE EMBEDDED UPPER AIR CYCLONIC CIRCULATIONS, ONE OVER WESTCENTRAL BAY OF BENGAL AND ANOTHER OVER SOUTH COASTAL MYANMAR & NEIGHBOURHOOD IN THE EAST-WEST TROUGH MERGED AND ARE SEEN AS A CYCLONIC CIRCULATION OVER CENTRAL BAY OF BENGAL EXTENDING UPTO 5.8 KM ABOVE MEAN SEA LEVEL TILTING SOUTHWESTWARDS WITH HEIGHT AT 0300 UTC OF TODAY, THE 23RD SEPTEMBER, 2024. UNDER ITS INFLUENCE, A LOW-PRESSURE AREA IS LIKELY TO FORM OVER WESTCENTRAL BAY OF BENGAL & NEIGHBOURHOOD DURING THE NEXT 24 HOURS.

SCATTERED LOW & MEDIUM CLOUDS WITH EMBEDDED INTENSE TO VERY INTENSE CONVECTION OVER BAY OF BENGAL, NORTH ANDAMAN SEA, GULF OF MARTABAN & ARAKAN COAST (MINIMUM CLOUD TOP TEMPERATURE IS MINUS 75-93 DEG CEL). SCATTERED LOW & MEDIUM CLOUDS WITH EMBEDDED MODERATE TO INTENSE CONVECTION OVER SOUTH ANDAMAN SEA & TENASSERIM COAST.

***PROBABILITY OF CYCLOGENESIS (FORMATION OF DEPRESSION) DURING NEXT 168 HRS:**

24 HOURS	24-48 HOURS	48-72 HOURS	72-96 HOURS	96-120 HOURS	120-144 HOURS	144-168 HOURS
LOW	LOW	-	NIL	NIL	NIL	NIL

***NOTE: EVERY 24HR FORECAST IS VALID UPTO 0300 UTC (0830 IST) OF NEXT DAY**

ARABIAN SEA:

SCATTERED LOW & MEDIUM CLOUDS WITH EMBEDDED MODERATE TO INTENSE CONVECTION OVER EASTCENTRAL ARABIAN SEA. SCATTERED LOW & MEDIUM CLOUDS WITH EMBEDDED WEAK TO MODERATE CONVECTION OVER SOUTH ARABIAN SEA, LAKSHADWEEP ISLANDS AREA, MALDIVES & COMORIN AREA.

***PROBABILITY OF CYCLOGENESIS (FORMATION OF DEPRESSION) DURING NEXT 168 HRS:**

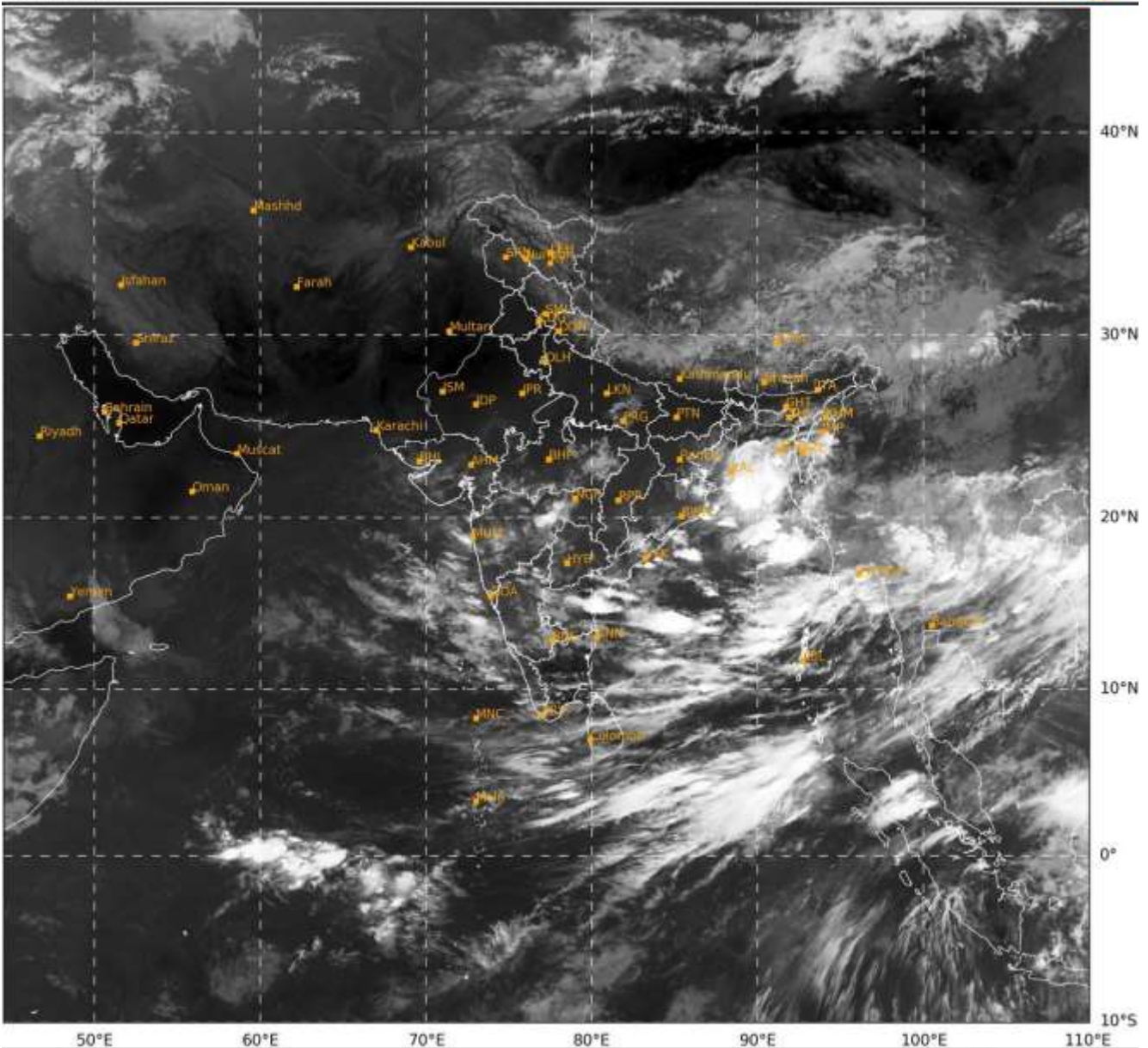
24 HOURS	24-48 HOURS	48-72 HOURS	72-96 HOURS	96-120 HOURS	120-144 HOURS	144-168 HOURS
NIL	NIL	NIL	NIL	NIL	NIL	NIL

***NOTE: EVERY 24HR FORECAST IS VALID UPTO 0300 UTC (0830 IST) OF NEXT DAY**

REMARKS: NIL

SAT : INSAT-3DR IMG
 IMG_TIR1 10.8 um
 LIC Mercator

23-09-2024/(0315 to 0342) GMT
 23-09-2024/(0845 to 0912) IST



434 936
 IMD, DELHI

Cloud distribution: (a) Isolated: <25%, Scattered:25-50%, Broken: 51-75%, Solid:>75%, Convection Intensity: (a) Weak: Cloud Top Temperature (CTT) >-25°C, (b) Moderate: CTT: - 25°C to -40°C, (c) Intense: CTT: - 41°C to -70°C and (d) Very Intense: : Less than -70°C
 PROBABILITY OF CYCLOGENESIS (FORMATION OF DEPRESSION):NIL: 0%, LOW: 1-33%, , MODERATE: 34-66% AND HIGH: 67-100%
 This is a guidance Bulletin for WMO/ESCAP Panel Member countries. Visit respective National websites for Country specific Bulletins